

**PRAXIS CARE  
ORGANISATIONAL STRUCTURE  
SENIOR LEADERSHIP TEAM**



**Carol Breen**  
CEO

**David Walsh**  
DIRECTOR OF FINANCE &  
CORPORATE SERVICES

**Nikki Irwin**  
ACTING DIRECTOR OF HR

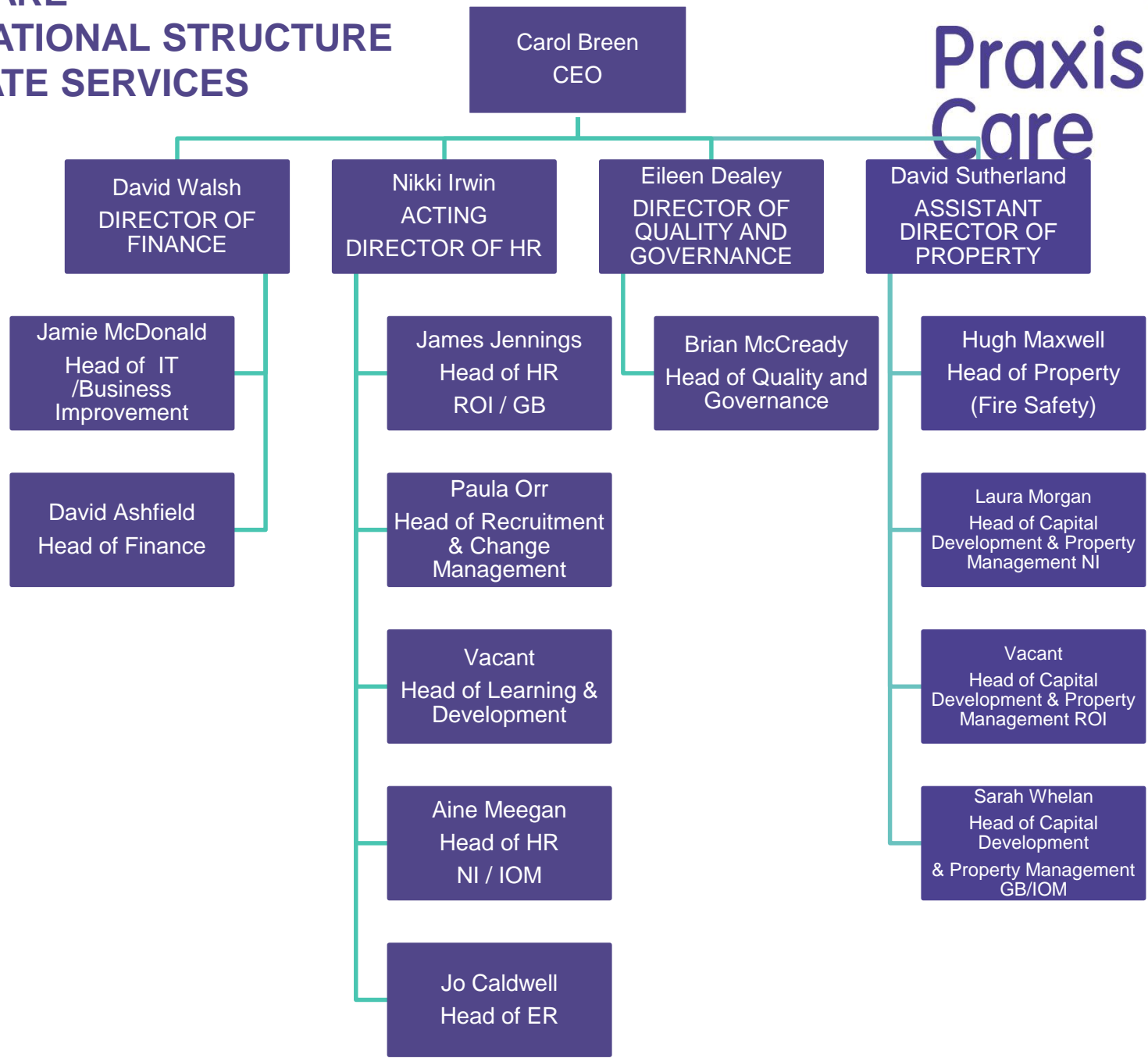
**Eileen Dealey**  
DIRECTOR OF QUALITY &  
GOVERNANCE

**Greer Wilson**  
DIRECTOR OF CARE &  
DEVELOPMENT NI & IOM

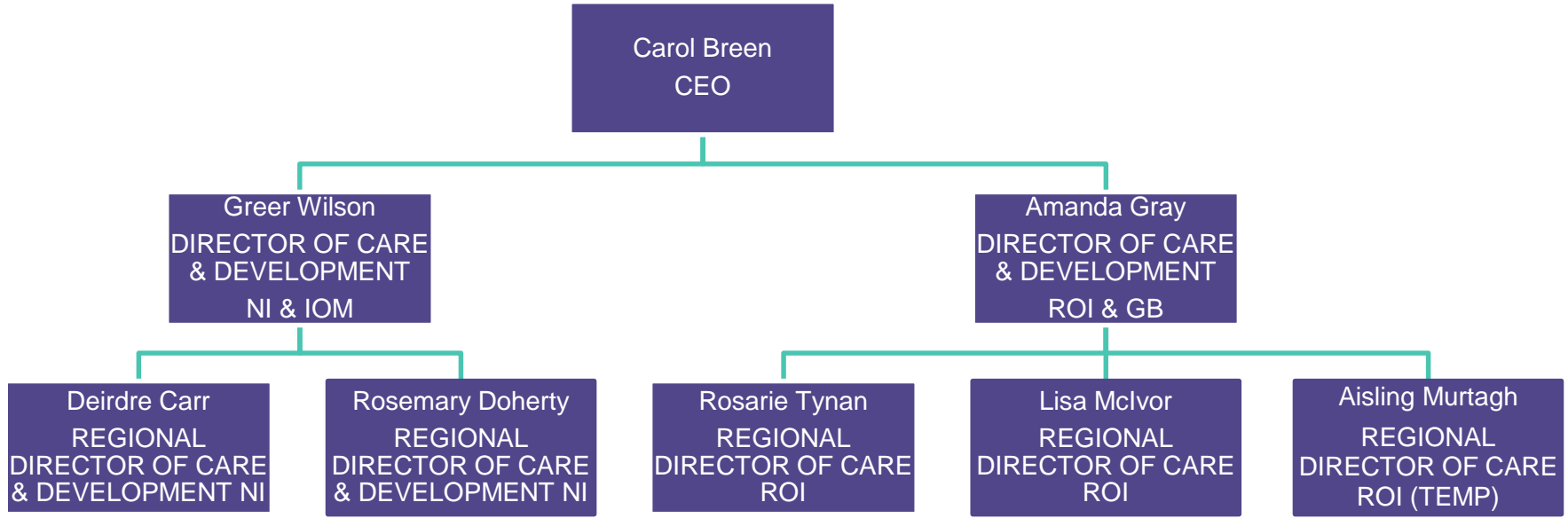
**Amanda Gray**  
DIRECTOR OF CARE &  
DEVELOPMENT ROI & GB



# PRAXIS CARE ORGANISATIONAL STRUCTURE CORPORATE SERVICES



# PRAXIS CARE ORGANISATIONAL STRUCTURE CARE AND DEVELOPMENT



**PRAXIS CARE  
ORGANISATIONAL STRUCTURE  
CARE & DEVELOPMENT  
NORTHERN IRELAND &  
ISLE OF MAN**



**Greer Wilson**  
Director of Care &  
Development NI / IOM

**Deirdre Carr**  
Regional Director of Care &  
Development NI/IOM

**Elise Todd**  
Head of Marketing &  
Communications

**Jenny Cassells**  
Head of SP &OMS

**Rosemary Doherty**  
Regional Director of Care &  
Development NI

**Aine Murnin**  
Head of Operations NI

**Darran McQuoid**  
Head of Operations NI

**Nikki Taylor**  
Temp Head of Operations NI

**Eioghnn MacLeod**  
Head of Operations NI/IOM

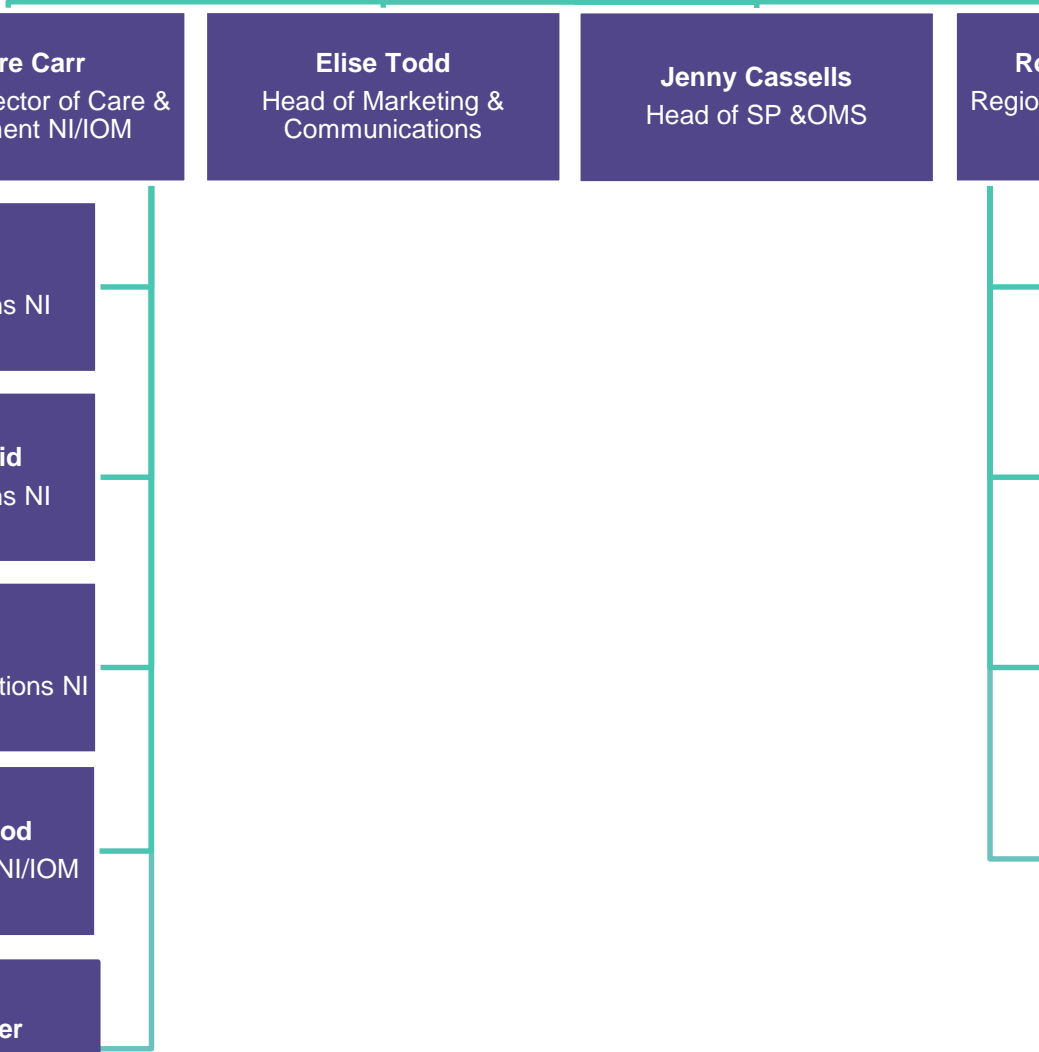
**Vanessa Coulter**  
Head of Operations NI

**Ciara Duffy**  
Head of Operations NI

**Sandra Murray**  
Head of Operations NI

**Shirley-Anne Hyslop**  
Head of Operations NI

**Stephen Fitzpatrick**  
Temp Head of Operations NI



# PRAXIS CARE ORGANISATIONAL STRUCTURE CARE & DEVELOPMENT REPUBLIC OF IRELAND & GREAT BRITAIN

