

**PRAXIS CARE
ORGANISATIONAL STRUCTURE
SENIOR LEADERSHIP TEAM**



Carol Breen
CEO

David Walsh
DIRECTOR OF FINANCE &
CORPORATE SERVICES

Nikki Irwin
ACTING DIRECTOR OF HR

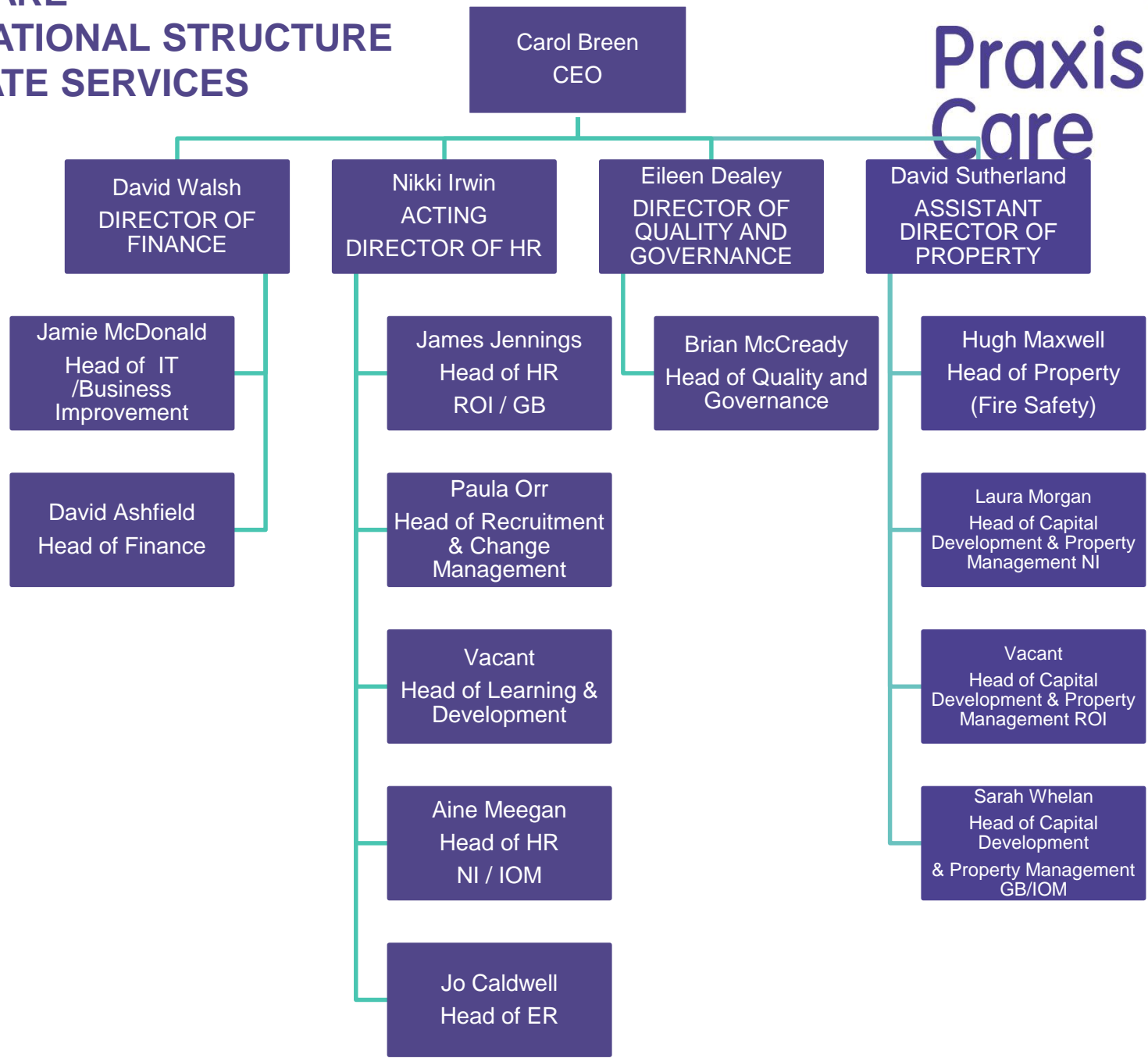
Eileen Dealey
DIRECTOR OF QUALITY &
GOVERNANCE

Greer Wilson
DIRECTOR OF CARE &
DEVELOPMENT NI & IOM

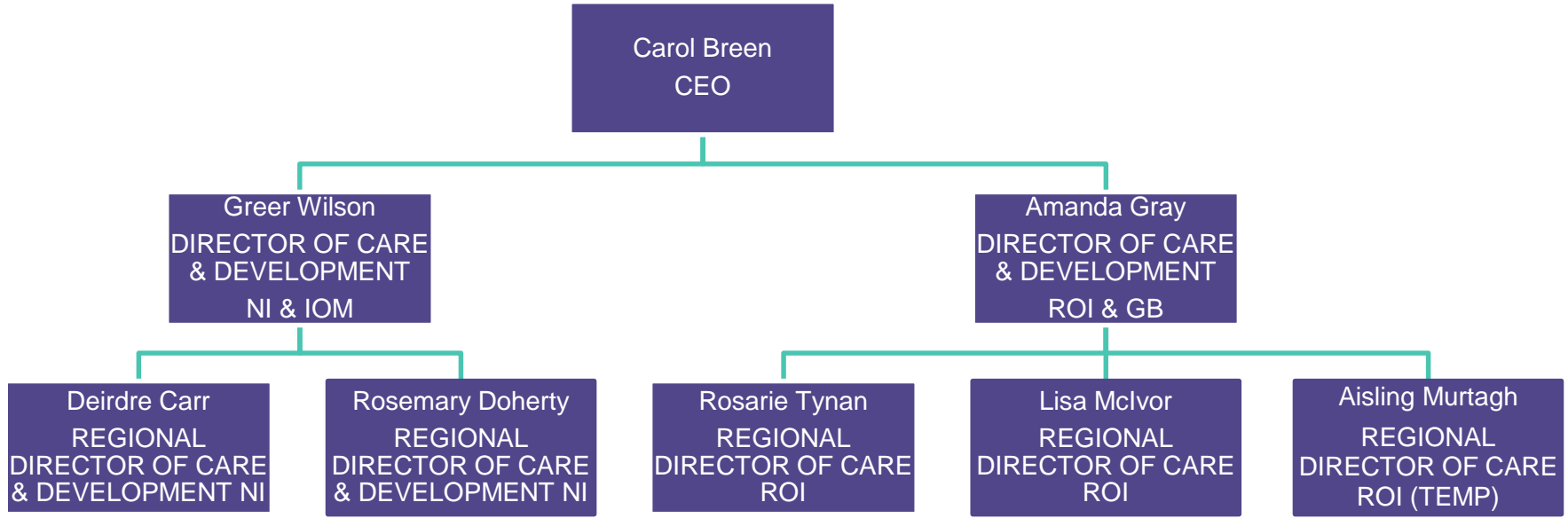
Amanda Gray
DIRECTOR OF CARE &
DEVELOPMENT ROI & GB



PRAXIS CARE ORGANISATIONAL STRUCTURE CORPORATE SERVICES



PRAXIS CARE ORGANISATIONAL STRUCTURE CARE AND DEVELOPMENT



PRAXIS CARE ORGANISATIONAL STRUCTURE CARE & DEVELOPMENT NORTHERN IRELAND & ISLE OF MAN



Greer Wilson
Director of Care &
Development NI / IOM

Deirdre Carr
Regional Director of Care &
Development NI/IOM

Vacant
Head of Marketing &
Communications

Jenny Cassells
Head of SP &OMS

Rosemary Doherty
Regional Director of Care &
Development NI

Aine Murnin
Head of Operations NI

Darran McQuoid
Head of Operations NI

Nikki Taylor
Temp Head of Operations NI

Eioghnn MacLeod
Head of Operations NI/IOM

Vanessa Coulter
Head of Operations NI

Ciara Duffy
Head of Operations NI

Sandra Murray
Head of Operations NI

Shirley-Anne Hyslop
Head of Operations NI

Stephen Fitzpatrick
Temp Head of Operations NI

**PRAXIS CARE
ORGANISATIONAL STRUCTURE
CARE & DEVELOPMENT
REPUBLIC OF IRELAND
& GREAT BRITAIN**

