



**Praxis**  
care

# 2011

**ANNUAL REPORT**

2010/2011

**30 YEARS AT THE  
CENTRE OF CARING**

### Vision Statement

**Excellence and Innovation in Supported Living.**

### Mission Statement

**Providing excellence and innovation in care and support to vulnerable children and adults affected by mental ill health, learning disability, acquired brain injury or dementia.**



## Foreword

In the thirtieth year of Praxis Care, the organisation can look back on many years of significant support being given to service users across mental ill health, learning disability, acquired brain injury and dementia services. It can equally look forward to the same support being experienced by service users in the future but in a very dynamic and ever challenging environment. This environment will present considerable financial issues for the organisation but also considerable opportunities for its growth. Thus, in this past year, Praxis Care has sought to maximise those opportunities and secure Praxis Care's position as part of the solution for the conundrum of more care and support being needed for vulnerable groups in society but less money being available to pay for that care and support.

Praxis Care has demonstrated both quality and value for money in its thirty years history. Consistent with research from around the world, it can, as a charity, deliver up to 30% more quality services at the same cost to the taxpayer and this is a message Praxis Care has delivered to politicians and Trusts over this past year and will continue to do so. In recognition of this, many of the political manifestos this year referenced the importance of the voluntary sector as part of the solution to the financial crisis.

*Nevin Ringland*

**Nevin Ringland - Chief Executive & Founder**

*Northern Ireland, Republic of Ireland, England and Isle of Man*

This year has also cemented active participation by service users in all areas of the organisation and this is the way forward. There has been increased service user involvement in staff recruitment panels, presentations for tenders for new care services and in many other areas of the organisation. Systems have been put in place to enable this to increase and Praxis Care welcomes this involvement.

Praxis Care volunteers are also key contributors to the Big Society and give added value to the organisation. Praxis Care has sought to increase voluntary activity this year through developing a culture of social responsibility in new and existing staff through advertising volunteering opportunities and raising the expectation of involvement at the recruitment stage. Praxis Care is also keen to co-ordinate volunteering opportunities for the general public and has committed finance to the employment of a Volunteer Co-ordinator.

Staff can look to its thirtieth year as a year where Praxis Care has established its credentials as a charity which is ready, willing and able to do what is necessary to deliver affordable, high quality, sustainable services to the most vulnerable individuals in society.

*WJ Canning*

**WJ Canning - Chairman**



## 30 Years at the Centre of Caring

Praxis Care has developed services over thirty years with a range of vulnerable service users.

### Adult Mental Health Services

Praxis Care provides a range of services to people experiencing mental ill health, actively promoting independence and supporting recovery. This includes supported living schemes, home response domiciliary care, day activity/drop-in and "out of hours" services.

### Adult Learning Disability Services

Praxis Care provides services for adults who have complex needs, including those with challenging behaviours. It uses positive approaches to enable people to realise their full potential. This includes residential and nursing homes, supported living schemes, daycare placements, respite and domiciliary care.

### Children's Learning Disability Services

Praxis Care provides long term care and shared care for children with severe learning disabilities. This includes respite for families of children who require high levels of care and can either be in a residential setting or in the child's own home.

### Dementia Services

Praxis Care provides a range of supported living and home based care services for older people with dementia. Praxis Care's model of care and support focuses on maintaining independent living skills, compensating for sensory and cognitive impairment using assistive technologies.

### Acquired Brain Injury Services

Praxis Care provides a range of services for people with acquired brain injury, including home based care and accommodation with support.

### Volunteer Befriending Services

Praxis Care runs volunteer befriending schemes, which help to reduce isolation and improve the wellbeing of people with mental ill health and people with learning disabilities.

From Kesh Day Care a shortlisted entry in the '30 Years of Praxis Care' competition

## 30 Years of Achievement

From modest beginnings, Praxis Care has developed over 30 years to become the largest charity delivering care services in Northern Ireland, and is the only charity originating in Northern Ireland to have expanded to England, Republic of Ireland and the Isle of Man.

This achievement was recognised when Nevin Ringland, the Chief Executive and Founder of Praxis Care, won the UK wide Directory of Social Change Lifetime Achievement Award in February 2011.

The award was presented at a prestigious Directory of Social Change Awards Ceremony in London and is in recognition of Nevin Ringland's lifetime commitment to the voluntary sector.

The Lifetime Achievement Award is for individuals who have made a major impact on their organisation/ community and have devoted their time and energy to

achieving sustained positive change over the span of their working lives. Their work has demonstrated measurable positive results and changes that have made a difference to individuals or the wider community.

**“I am delighted to win this award on behalf of the staff, services users and volunteers of Praxis Care. One person does not make an organisation. I am delighted to be one of the many who have contributed to Praxis Care's work.”**

*Nevin Ringland  
Chief Executive and Founder of Praxis Care*

Nevin Ringland, Chief Executive and founder of Praxis Care, receives the Lifetime Achievement Award from Catherine Johnstone and Debra Allcock Tyler at the Directory of Social Change Awards Ceremony in London.







## Celebrating 30 Years of Praxis Care

Praxis Care hosted a Pearl Gala Ball at the La Mon Hotel and Country Club on Friday 8th April to mark the 30 year anniversary.

The event was hosted by May McFettridge and included a number of special guests who have become outstanding advocates for the province over the past 30 years - Dame Mary Peters, Zoe Salmon, Dr Janet Gray, Lord David Trimble, The Three Priests - Father Eugene O'Hagan, Father Martin O'Hagan and Father David Delargy, and The Lord Mayor of Belfast, Councillor Pat Convery.

Nevin Ringland, Chief Executive and founder of Praxis Care stated:

"The Pearl Ball celebrates 30 years of Praxis Care providing care and support to nearly 1,500 vulnerable children and adults. It is a considerable achievement for staff that the charity has received the Investors in People and ISO 9001 awards during this time.

The Ball was a great way to recognise the staff who make the work of Praxis Care possible and the organisation is very grateful for support from the local business community, service users, carers and friends which helped to make the evening such a success."

**"The Pearl Ball celebrates 30 years of Praxis Care providing care and support to nearly 1,500 vulnerable children and adults. It is a considerable achievement for staff that the charity has received the Investors in People and ISO 9001 awards during this time."**

Praxis Care Chief Executive Nevin Ringland, Dame Mary Peters, Paul Gray and Dr Janet Gray celebrate 30 years of Praxis Care



Daphne Trimble and Lord David Trimble attend Praxis Care's 30 year Pearl Gala Ball



Fr David Delargy, Zoe Salmon, Fr Martin O'Hagan and Fr Eugene O'Hagan outside the La Mon Hotel and Country Club



Cllr Pat Convery and Cllr Bernie Kelly with Praxis Care Chief Executive Nevin Ringland at the Pearl Gala Ball



Host for the evening May McFettridge

# Strategic Aims and Achievements During the 30th Year

## Care Services

### Aim

Praxis Care aimed to increase and develop services for vulnerable people.

### Achievements

Praxis Care took over three Residential Care Homes for adults with learning disabilities at Weldon Road, Norwood Drive and Malton Drive, in Cheshire, England in April 2010.

Praxis Care commenced a new service for eight individuals with profound disabilities in Brookvale, County Monaghan in April 2010.

Praxis Care secured a tender for Mental Health services in Birmingham which is due to commence in April 2011.

Praxis Care secured a tender for Mental Health services in Dudley which is due to commence in July 2011.



William Carter, Ballymena

## Partner Organisations

### Aim

Praxis Care aimed to ensure that its partner organisations maintained financial viability and deliver on their articles and memoranda.

### Achievement

Praxis Care Housing Association in the Republic of Ireland, the Secret Garden in Hillsborough, and the Northern Ireland Agoraphobia and Anxiety Society continued to receive support and management services from Praxis Care, maintained financial viability and continued to deliver on their articles and memoranda.



Gallagh House, Enniskillen



# Strategic Aims and Achievements During the 30th Year

## Public Relations

### Aim

Praxis Care aimed to develop an effective Public Relations and Marketing Strategy and raise awareness of the range of work it carries out.

### Achievement

Praxis Care successfully developed and implemented a PR and Marketing Strategy, expanded its use of the website, produced a corporate promotional DVD and administered its first Stakeholder Survey. Praxis Care held a series of events in September and October 2010 to mark World Mental Health Day, commencing with the launch event at Stormont, Belfast.

### Aim

Praxis Care aimed to implement effective communication systems, making best use of information technology.

### Achievement

Implementing a new Management Information System across the whole organisation to improve communication and statistical information.

### Aim

Praxis Care aimed to engage vigorously in lobbying to influence policy, in all jurisdictions.

## Achievement

Praxis Care continued to influence policy and lobby at the highest levels. The CEO has met regularly with politicians and their advisors over the year.

## Staff Recruitment and Development

### Aim

Praxis Care aimed to recruit, develop and maintain a workforce capable of delivering a quality service.

### Achievement

Praxis Care reviewed the criteria for new staff to ensure they had the appropriate skills and qualifications necessary to deliver a quality service.

### Aim

Praxis Care aimed to promote a learning culture throughout the organisation.

### Achievement

Praxis Care continued its investment in NVQ training and continued to offer extensive and flexible in-house training programmes responsive to the needs of staff and service users.



Christine Hitchcock, Banbridge



Graham Taubman, Glenroyd

# Strategic Aims and Achievements During the 30th Year

## Competitive Strategy

### Aim

Praxis Care aimed to focus on value for money through sound financial management.

### Achievement

Praxis Care implemented a Value for Money Strategy across the organisation and made sufficient savings to compensate for the restricted contracts imposed by the Trusts.

### Aim

Praxis Care aimed to invest in resourcing and structuring support services departments to enable effective service provision.

### Achievement

Praxis Care recruited a professional Health and Safety Officer, a Property Manager, a Senior Payroll Officer and an MIS Project Lead.

### Aim

Praxis Care aimed to provide added value by generating restricted and unrestricted income streams through fundraising.

### Achievement

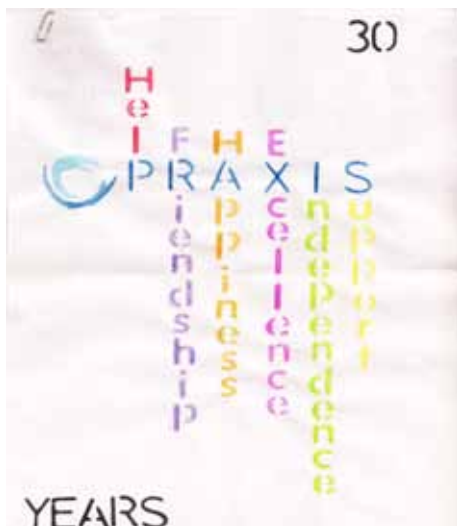
Praxis Care expanded its fundraising activities and increased the funding streams managed by a dedicated Fundraising Department.

### Aim

Praxis Care aimed to expand its volunteer base.

### Achievement

Praxis Care centralised the management of volunteers and continues to expand the role of volunteering through encouraging social responsibility within its staff group.



Abbey Jayne Clokey, Children's Respite Unit, Beechfield, Conlig



Service Users from Portadown

# Strategic Aims and Achievements During the 30th Year

## Quality and Governance

### Aim

Praxis Care aimed to achieve external quality accreditation and ensure the application of consistent measurable standards.

### Achievement

Praxis Care produced and implemented a Quality Management System and achieved external accreditation to ISO 9001:2008 in June 2010.

### Aim

Praxis Care aimed to ensure the involvement of service users in various forums throughout the organisation.

### Achievement

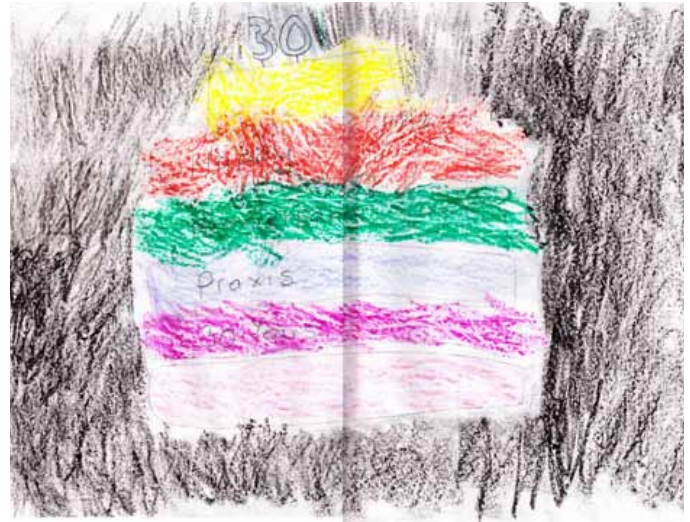
Service users participated in decision making forums and Steering Groups for a number of projects.

### Aim

Praxis Care aimed to be a leader in innovation, by maximizing the use of research to inform best practice.

### Achievement

Praxis Care's Research Department communicated new and innovative methods of best practice and commenced evaluations of services, piloting outcome measurement tools for service users.



Billy Keagan, Melton



Jessica McGowan, Swan House, Navan



## Significant Events During the 30th Year

The Secret Garden in Hillsborough hosted the annual Garden Show Ireland festival. Around twenty thousand people enjoyed a full weekend of good food, activities and entertainment. Staff and service users ensured that the event was a great success for Praxis Care, selling plants from the garden and providing good home baking from the coffee shop.



Staff members Eamon McClarnon, John Cunningham, Dympna McClorey and Pauline Paterson, are assisted by volunteer Mary Jackson at Garden Show Ireland



Paul Collins and Vanessa Coulter promote the work of Praxis Care at the Garden Show

During the year, Praxis Care successfully increased the number of services it provides. In the Republic of Ireland, a new service for individuals with disabilities was commenced in Brookvale, County Monaghan. In the north of England, Praxis Care also took over three residential care homes for adults with learning disabilities at Weldon Road, Norwood Drive, and Malton Drive, in Cheshire.



Weldon Road is a residential care home with places for seven adults with learning disabilities



Malton Drive is a residential care home meeting the needs of six adults with learning disabilities



## Significant Events During the 30th Year

Praxis Care launched World Mental Health Day with an awareness event at the Long Gallery in Stormont. Seamus Flood from Lurgan spoke about his experiences of Praxis Care services. Other speakers included Nevin Ringland, Chief Executive of Praxis Care, and Minister Michael McGimpsey.



Nevin Ringland, Minister McGimpsey and service user Seamus Flood at the launch of World Mental Health Day 2010 at Stormont



Nevin Ringland, Chief Executive of Praxis Care with Jim Wells MLA at the launch of World Mental Health Day at Stormont

## Significant Events During the 30th Year

Praxis Care held its third annual Staff Awards Ceremony at The Culloden Hotel.

NI Ombudsman Tom Frawley CBE, delivered an inspiring and entertaining speech before presenting awards to staff.

After lunch, the Conlig Workskills Drama Group performed their play "The Little People of Clandeboye Forest" which received a standing ovation from the audience.

May McFettridge then took to the stage and entertained the audience while hosting "Praxis Has Talent" where brave staff members performed in front of the audience of 250 people.



Mrs Margaret Cassidy (centre) presents the Pat Cassidy Award to Will Bassett and Sonia Mawhinney



NI Ombudsman Tom Frawley presented a number of awards to Praxis Care staff including Claire Lister, Rebecca Eaton, Nicola Gardiner and Cathie Donnelly. Also pictured is Chief Executive Nevin Ringland



John Ferguson, Andrea Smith, Sharon Livingstone, Bart Gliniecki and Jill Wright from Forest Lodge at Praxis Care's Awards Day





Rosaleen Hannon and Olive Clinton from Mullingar receive awards from NI Ombudsman Tom Frawley, CBE and Nevin Ringland, Chief Executive



Staff from the Crumlin scheme who attended the Staff Awards Day.  
From back to front: Oonagh McGarry, John Fisher, David Martin, Linzi Swann, Sharon McKinney, Adeline Quinn and Teresa Duffy



Staff who received training awards at Praxis Care's Staff Awards Day at the Culloden Hotel.

From left to right: Nicola Faloona, Sharon Livingstone, Andrea Smyth, Linda Lyons, Vanessa Coulter, Kathryn Leeburn, Fred Graham, Melanie Bowden, Bart Gliniecki and Victoria Rafferty



Staff who received Long Service Awards at Praxis Care's Staff Awards Day at the Culloden Hotel.

From left to right: Michelle O'Neill, Aine Murnin, Louise Lyons, Jackie Lees, Phyllis Cassidy, Christine Quinn, Tracy Lindeque, Jennifer Collister, Linda Hendry, Alyson Dunn, Frances Philpott, Ingrid Ellis, Cathy Davies and Colin Matthews

## Service Users Helped During the 30th Year

### Number Of Staff

Total:	1116
--------	------

### Number of Adults who live in a Home provided by Praxis Care:

Learning Disability And Acquired Brain Injury	185
Mental Health	255
Elderly	41
Total:	481

### Number of Adults who are helped to live in their own home by Praxis Care:

Home Response	171
Floating Support	152
Total:	323

### Number of Adults who attend Praxis Care Day Activity/Workskills/Lunch Clubs:

Mental Illness	110
Learning Disability	39
Total:	149

### Number of Children Receiving Respite Services:

Total:	108
--------	-----

### Number of Volunteer Befriending Matches:

Total:	126
--------	-----

### Number of People Supported by Praxis Care:

Total:	1187
--------	------



# Statement of Financial Activities During the 30th Year

Incorporating the income and expenditure account for the year ended 31 March 2011

	Unrestricted funds 2011 £	Restricted funds 2011 £	Total funds 2011 £	Total funds 2010 £
<b>Income from generated funds</b>				
Voluntary income	29,468	-	<b>29,468</b>	42,181
Activities for generating funds	31,968	-	<b>31,968</b>	43,763
Investment Income	20,330	-	<b>20,330</b>	5,918
Income from charitable activities	21,254,654	4,784,354	<b>26,039,008</b>	24,429,241
Other Incoming Resources	18,664	-	<b>18,664</b>	40,403
<b>Total Incoming Resources</b>	<b>21,355,084</b>	<b>4,784,354</b>	<b>26,139,438</b>	<b>24,561,506</b>
<b>Resources Expended</b>				
Costs of generating funds	155,252	-	<b>155,252</b>	172,689
Charitable activities	20,127,762	4,472,207	<b>24,599,969</b>	23,302,023
Governance costs	190,100	-	<b>190,100</b>	31,065
Loss on disposal of fixed assets	15,003	-	<b>15,003</b>	-
Impairment of freehold property	-	-	-	540,470
<b>Total Resources Expended</b>	<b>20,488,117</b>	<b>4,472,207</b>	<b>24,960,324</b>	<b>24,046,247</b>
<b>Net incoming resources</b>	<b>866,967</b>	<b>312,147</b>	<b>1,179,114</b>	<b>515,259</b>
Exceptional item	(1,868,744)	(331,256)	<b>(2,200,000)</b>	-
Revaluation of freehold property	-	-	-	(333,632)
Unrealised (deficit)/gains on investments	(1,133)	-	<b>(1,133)</b>	3,047
Unrealised foreign exchange (loss)/gain	(94,335)	-	<b>(94,335)</b>	(97,013)
<b>Net movement in funds for the year</b>	<b>(1,097,245)</b>	<b>(19,109)</b>	<b>(1,116,354)</b>	<b>87,661</b>
Transfer between funds	(13,996)	13,996	-	-
Total funds brought forward	11,447,246	82,429	<b>11,529,675</b>	11,442,014
<b>Total funds carried forward</b>	<b>10,336,005</b>	<b>77,316</b>	<b>10,413,321</b>	<b>11,529,675</b>

The Statement of Financial Activities includes all gains and losses in the year and therefore a statement of total recognised gains and losses has not been prepared.

All of the above amounts relate to continuing activities.

## Service Directory in the 30th Year

Mental Health Schemes			
<b>Advocacy Project</b>	A carers advocate is currently employed in the Belfast Trust area	<b>Larne</b>	Dispersed Intensively Supported Housing - 6 places and Home Response - 8 places.
<b>Antrim</b>	Dispersed Intensively Supported Housing - 16 places	<b>Laurel Lodge, Larne</b>	Supported living group house and flat luster - 12 places
<b>Antrim, The PARC</b>	Day Care recreational activity	<b>Lisnaskea</b>	Flat cluster and floating support - 11 places
<b>Ballyclare</b>	Supported Group House and Flat Cluster - 18 places	<b>Lurgan</b>	Dispersed Intensively Supported Housing - 21 places, and a Home Response Scheme
<b>Banbridge</b>	Supported living group house and residential flat cluster - 16 places	<b>Magherafelt</b>	Dispersed Intensively Supported Housing - 15 places
<b>Bangor</b>	Residential Flat Cluster with 6 places. Dispersed Intensively Supported Housing - 8 places, and a Home Response Scheme	<b>Manchester, Plasden Court</b>	Dispersed Intensively Supported Housing - 15 places; Outreach - 4 places
<b>Bury Floating Support</b>	A floating support service for people with substance misuse issues	<b>Newry - Kilmorey House</b>	Supported living group house and flat cluster - 13 places, and a Home Response Scheme
<b>Coleraine</b>	Dispersed Intensively Supported Housing - 15 places, and a Home Response Scheme	<b>Newry - Connaught House</b>	Supported living group house - 5 places
<b>Derry City, Rockmills</b>	Dispersed Intensively Supported Housing - 12 places	<b>Newtownards</b>	Dispersed Intensively Supported Housing - 8 places
<b>Dunmisk Manor, West Belfast</b>	Residential flat cluster - 16 places	<b>Portadown</b>	Dispersed Intensively Supported Housing - 17 places, and a further 14 group living places
<b>Foyle Young People</b>	Supported Living Flat Cluster - 6 places	<b>The Star Club, Isle of Man</b>	Club House day centre offering drop-in service and training programmes
<b>Isle of Man Home Support Service</b>	Provides 180 hours per week to clients living at home	<b>West Belfast</b>	Dispersed Intensively Supported Housing - 16 places
<b>Isle of Man Supported Living Accommodation</b>	5 individual flats with 24 hour staff support in Douglas. 5 individual flats with Outreach support in Douglas	<b>Young People Leaving Care, Antrim</b>	A befriending service for young people leaving care

Dementia Schemes			
<b>Clements Court, Foyle</b>	Individual flats with housing support services - 10 places	<b>Lisnaskea</b>	A floating support service
<b>Coleraine Floating Support</b>	A floating support service	<b>Parklands, Lisburn</b>	Supported living group house - 8 places
<b>Foyle Floating Support</b>	A floating support service	<b>St Paul's Court, Lisburn</b>	Purpose built accommodation with 15 bungalows and 8 flats - 23 places

<b>Learning Disability Schemes</b>			
<b>Beechfield Respite Unit, Conlig</b>	Children's respite care unit serving 37 children	<b>Hugomont, Ballymena</b>	A service providing care for young people - 4 places
<b>Blandhardstown</b>	Domiciliary care unit providing care and support - 1 place	<b>Kesh Day Care Centre</b>	Day care service for adults - 12 places
<b>Bocombra Cookie Company</b>	A work skills programme where service users make, package and sell cookies to local shops and coffee shops - 11 places	<b>Kesh, Le Bistro</b>	A bakery and café providing work skills programme - 5 places
<b>Brookvale</b>	Community living for 8 adults	<b>Kesh, Mantlin Cottage</b>	Residential care home - 9 places
<b>Castle Lane Court, Lurgan</b>	Supported living accommodation - 17 places	<b>Kesh, Pettigoe Road</b>	Supported living accommodation - 10 places
<b>Conlig Workskills</b>	A work skills programme where service users make, package and sell cookies to local shops and coffee shops as well as working in the gardening project - 27 places	<b>Kesh, The Willows</b>	Supported living accommodation - 4 places
<b>Coombe House, Kidderminster</b>	Nursing care accommodation for adults - 12 places	<b>Kimberley House, Newtownards</b>	Residential care home - 13 places
<b>Cornerstones, Ardee</b>	Supported living accommodation for male adults with autism - 4 places	<b>Malton Drive, Cheshire</b>	Residential service - 6 places
<b>The Courtyard, Crumlin</b>	Supported living accommodation - 12 places	<b>Meenalig and Swan House, Navan</b>	Supported living accommodation for people with mild to moderate learning difficulties and challenging behavior - 10 places
<b>Derry Age Appropriate Day Care</b>	Day care service for older adults	<b>Melton Project, Leicester</b>	Children's respite care unit - 4 places
<b>Derry Befriending</b>	Volunteer befriending programme for adults	<b>Mullingar</b>	Residential unit providing care and support to adults - 4 places
<b>Derry Cookie Company</b>	A work skills programme where service users make, package and sell cookies to local shops and coffee shops - 23 places	<b>Norwood Drive, Cheshire</b>	A residential unit - 6 places
<b>Donabate</b>	Community house providing care and support - 3 places	<b>Praxis Domiciliary Care Agency, Kidderminster</b>	Provides support for 4 people in 2 homes
<b>Forest Hill, Conlig</b>	Supported living accommodation - 14 places	<b>Rainbow Lodge, Ballymena</b>	Children's respite care unit - 8 places
<b>Forest Lodge, Portadown</b>	3 residential care homes - 9 places	<b>Rose Orchard, Kidderminster</b>	Nursing care accommodation for adults - 5 places
<b>Galliagh House, Enniskillen</b>	Residential care home - 24 places	<b>The Secret Garden, Hillsborough</b>	Coffee shop and garden centre offering work skills programme - 25 places
<b>Glenfield Project, Leicestershire</b>	Children's respite care unit - 4 places	<b>Weldon Road, Cheshire</b>	A residential unit - 7 places
<b>Glenroyd, Isle of Man</b>	Supported living accommodation - 5 places		

# Strategic Management During the 30th Year

The Board is responsible for ensuring that an appropriate strategic direction for the organisation is developed and that relevant performance measures are in place. The Board receives regular reports on all aspects of the organisation's work.

## Board Members

### Mr Bill Canning, Chair

*FIPD, MHSM, Cert.Health Econ*

### Mr John McGregor, Vice Chair - MSc Eng

*Dr Oliver Shanks - MB, BCh, BAO, MRCP, FRCPsych*

### Miss Margaret Stevenson

*Miss Anne Vance - MA, Dip. Car.ED, LGSM-Speech*

### Mr Vincent Malone

*Mrs Rosaleen Moore - OBE, DIPSW, CQSW*

### Mr Arthur Canning -

*Dip.(EstMan), MB Eng, Assoc. RICS, MCMI, MAPM*

### Dr Etta Eid-Jennings - MBE

## Praxis Care Committees (attended by Representative Board members and Praxis Care Senior Staff)

Remuneration Committee

Research Committee

Finance Committee

Board Development Committee

HR Committee

Health & Safety Committee

Governance Committee

## Risk Management

The Governance Committee has delegated authority from the Board to ensure that an active risk management process is in place and forms part of Praxis Care's ongoing organisational activity. The key risk continues to be the impact of the economic recession on income generation which the Board and the Senior Management Team fully recognise. The impact of this risk continues to be carefully monitored and managed.

## Public Benefit

The Trustees continue to give due regard to the public benefit provided by the charity in relation to its charitable purposes and have given due consideration to guidance issued by the Charity Commission on this subject.

## Senior Management Team

Authority to conduct Praxis Care's day-to-day activities is delegated to the Chief Executive, who is responsible for ensuring that the agreed strategy and policies are carried out. A Senior Management Team reports to the Chief Executive and meets weekly.

### Nevin Ringland - Chief Executive / Founder

*BSc, Dip Bus Admin*

### Irene Sloan - Director of Care, Quality &

**Governance** *BSSc, MSSc, CQSW, CASW, CSWL, ASW*

### Alyson Dunn - Director of Care & Development

*MA, IPDS, ISM, CQSW*

### Andy Mayhew - Director of Care

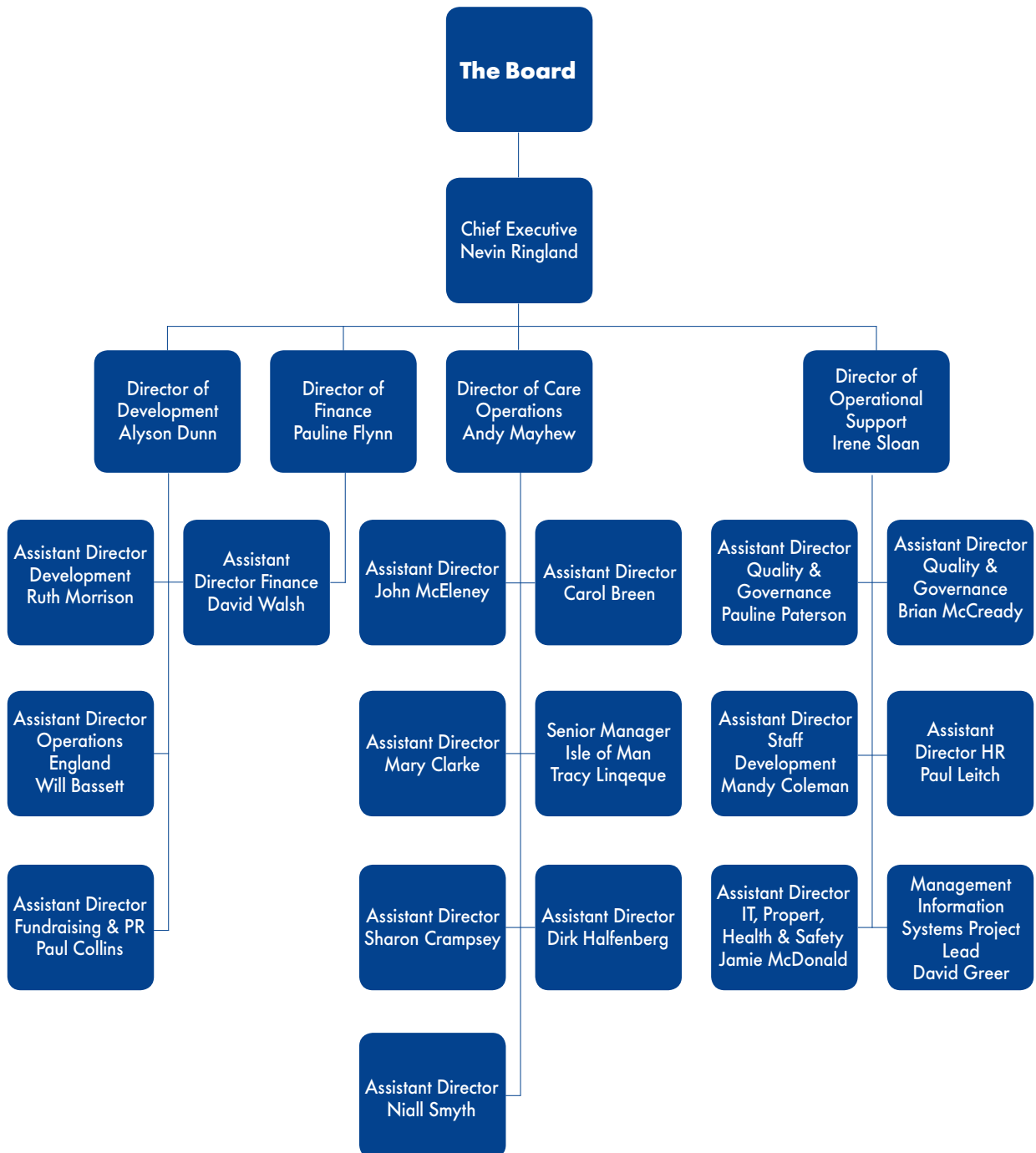
*BA, MSSc, CQSW*

### Pauline Flynn - Director of Finance

*BSSc (Hons), FICA, FCIT*



# Praxis Care Organisational Structure During the 30th Year



# 30 Years of Praxis Care

## 30 Years of Praxis Care

A lady from Praxis Care said,  
"We offer a flat with your own special bed."  
Independence with someone there  
Throughout the day to chat and care.  
An opening into community life  
For me, a Prisoner of Mental Strife.  
A stepping stone so that one day  
Home life I'll enjoy in my own special way.  
A man from Praxis Care said,  
"We offer support for chores you dread."  
Independence with someone there  
To help with shopping and general care.  
An opening into community life  
For me, a Prisoner of Mental Strife.  
A stepping stone so that one day  
I care for myself in my own special way.  
A lady from Praxis Care said,  
"Come to the Star Club, paint it red!"  
Activities and fun with people there  
Tea and laughs without a care.  
An opening into community life  
For me, a Prisoner of Mental Strife.  
A stepping stone so that one day  
I fill daylight hours in my own special way.  
A man from Praxis Care said,  
"Our befriending schemes are all friend-led."  
Experiences new with someone there  
Cinema, beach, trips to the fair.  
An opening into community life  
For me, a Prisoner of Mental Strife.  
A stepping stone so that one day  
I make my own friends in my own special way.  
A lady from Praxis Care said,  
"Our Sunday Lunch, you'll be well-fed!"  
A meal shared with people there  
Laughter, friendship, people who care.  
An opening into community life  
For me, a Prisoner of Mental Strife.  
A stepping stone so that one day  
I cook for my friends in my own special way.  
Thank you Praxis, from what I've said,  
You've helped us cope with things we dread.  
With your trusted and trained Praxis Staff there  
You help us succeed as your Staff really care.  
An opening into community life  
For us, all Prisoners of Mental Strife.  
For thirty years and many more days  
You've rebuilt our lives in so many ways.  
Thank you.

**Bethany De Legh-Runciman**  
*Douglas, Isle of Man*

## A Second Chance

When you are feeling lonely and in deep despair  
It is very frightening, there's a big, big world out there  
People they may come and go, don't give a second glance  
But out there is help for you, for a second chance

I feel very honoured that I've had the chance to be  
A client of Praxis Mental Health Charity.  
It started up in Ireland, just so very small.  
Now 30 years on it's helping one and all.

Everybody's Different, it will take a while,  
But if you can, persevere, it will make you smile.  
Don't give up so easily, the staff they really care  
And when you feel there's no way out,  
There's always someone there.

**Kerry Ann Swift**  
*Star Club, Isle of Man*

## Praxis Care - A Pearl of Wisdom

A worthy cause for 30 years  
Coping with human grief and fears  
Where caring is a work of art  
And kindness flows straight from the heart

Praxis Care gives much needed hope  
To those who can no longer cope  
Each man and woman, boy and girl  
See Praxis Care as a priceless pearl

Our aim where drink and drugs are rife  
Is for a better quality of life  
To make these darkest moments bright  
Let Praxis Care be your guiding light

**Norman Mooney**  
*Derry*

*Shortlisted entries in the  
'30 Years of Praxis Care' competition*



**Praxis**  
care

**Praxis Care**  
Annual Report 2010/2011

Praxis Care Head Office  
25 - 31 Lisburn Road, Belfast, BT9 7AA

T: 028 9023 4555  
F: 028 9024 5535

[www.praxiscare.org.uk](http://www.praxiscare.org.uk)

Charity Numbers: XN80842 / 826  
Registered Number: NI17623